

RedLine Cooler

Streamlined Cooler Management

Now you can quickly and accurately track products from the moment they are received at your cooler or processing facility until they are successfully shipped to your customers. RedLine Cooler's integrated mobility solution increases your operation's throughput, reduces shipping errors and improves your track and trace capabilities.

"Going Mobile" in the Cooler

Traditional paper-based methods slow down your operations and are prone to human error. RedLine Cooler™ combines our practical software with reliable mobile and wireless hardware to provide a complete solution, allowing workers to view information and record their actions when and where the work is performed. RedLine Cooler's real-time integration with Famous allows for validation of all actions to trap potential errors immediately. Combine this with installation, service, and support from RedLine's team of expert technicians and you have a complete solution.

Higher Throughput and Productivity

Help your team move faster and ship more orders. Capturing information with wireless scanners means fewer trips between the cooler and the office to update records and eliminates data entry and handwriting errors.

- **Directed Picking and Shipping** based on FIFO, Date, Grower Block, or Lot
- **Special Order Requirements** are highlighted in viewable order notes
- **Substitutions are Flagged**, ensuring only "legal" substitutions are allowed
- **Real-Time Validation** of all actions eliminates potential errors
- **Pallet Consolidation** tracks cooler-based pallet configuration changes
- **Pallet Reservation** allows individual pallets to be reserved for specific orders

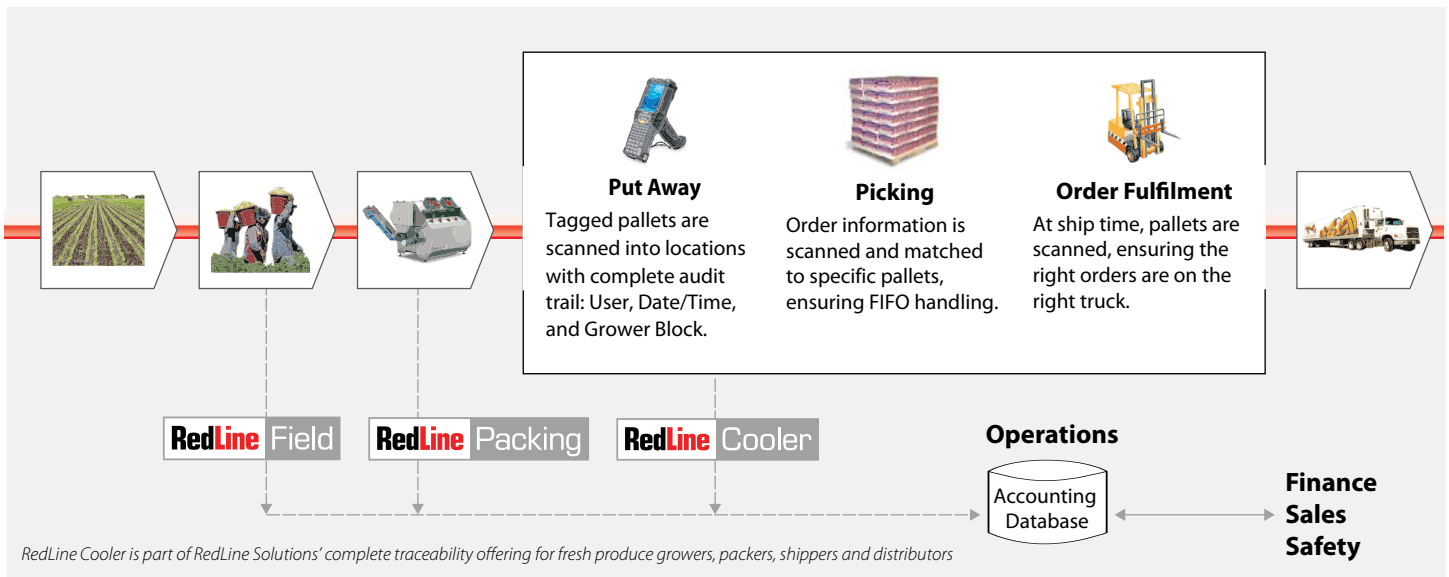
New Features for RedLine Cooler

- Improved interface for faster picking and shipping
- Paperless truck inspection linked to sales orders
- Physical Inventory with aggregate or detailed counts
- Improved traceability with process and treatment tracking
- Enhanced reporting for productivity and traceability
- Support for multiple Famous instances



“RedLine Cooler both fulfilled our traceability needs and reduced our average loading time by 50%”

Daniel Kolbach, IT Manager, Eastern Propak



Increased Inventory Control Efficiency

RedLine Cooler provides the ability to manage inventory with wireless scanners ensuring complete and up-to-date inventory information.

- **Every Inventory Action** is recorded and passed to the accounting system in real time
- **Inventory Inquiries** display information organized for the way you work, including views by product, by grower block, by lot, or by location
- **Physical Inventory Counts** on the wireless device are fast and accurate, enabling nightly reconciliation
- **First-in First-out Picking Rules** ensure minimal waste and write-offs

Complete Cooler Traceability

RedLine Cooler automatically captures a wealth of information at both the bin and pallet level, ensuring that you meet and exceed traceability requirements.

- **Product Tracking** records every pallet or bin's location within your operation as well as its movement through your locations

- **Treatment Logging** captures product movement in and out of treatment locations and through processes
- **Pallet Audit Trail** offers a complete history of a pallet's movement through the Cooler, including who took what action where and when

Proven Reliability

With more than 30 installations across North America, RedLine Cooler is a proven solution for traceability and operational efficiency. RedLine Solutions' engineers will work closely with your IT and operations teams to specify, design, and install the most appropriate solution for your operation. RedLine's partnerships with Motorola/Symbol and Zebra give our clients access to the most advanced and reliable hardware available. RedLine Solutions, Inc. has provided automated data capture solutions to companies of all sizes since 1997.

To learn more, call

888-801-2039

